





THE SANDS WHITLEY BAY



7136

WHITLEY BAY



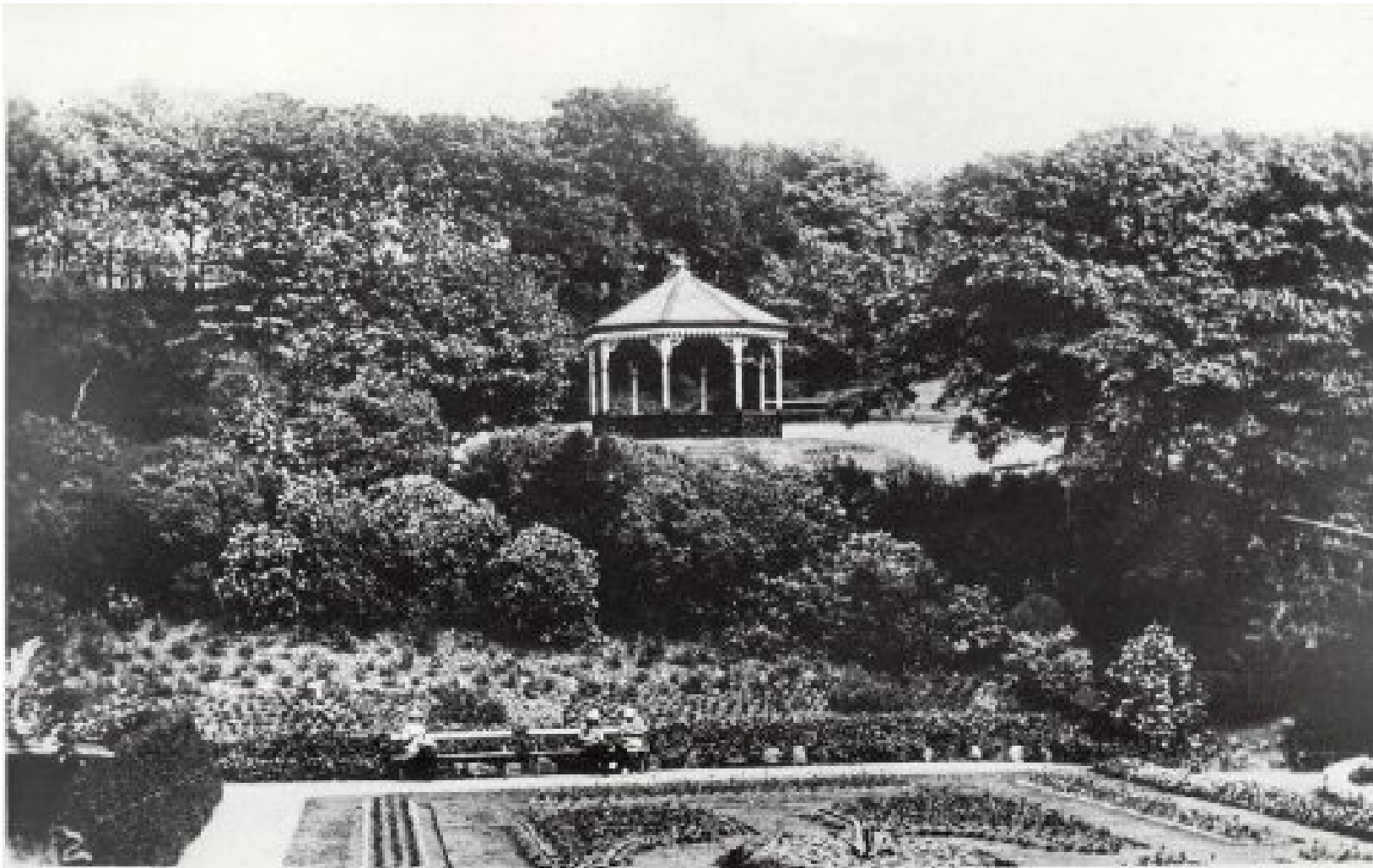


"SANDS." TYNEMOUTH.



On the Little Whitley Bay

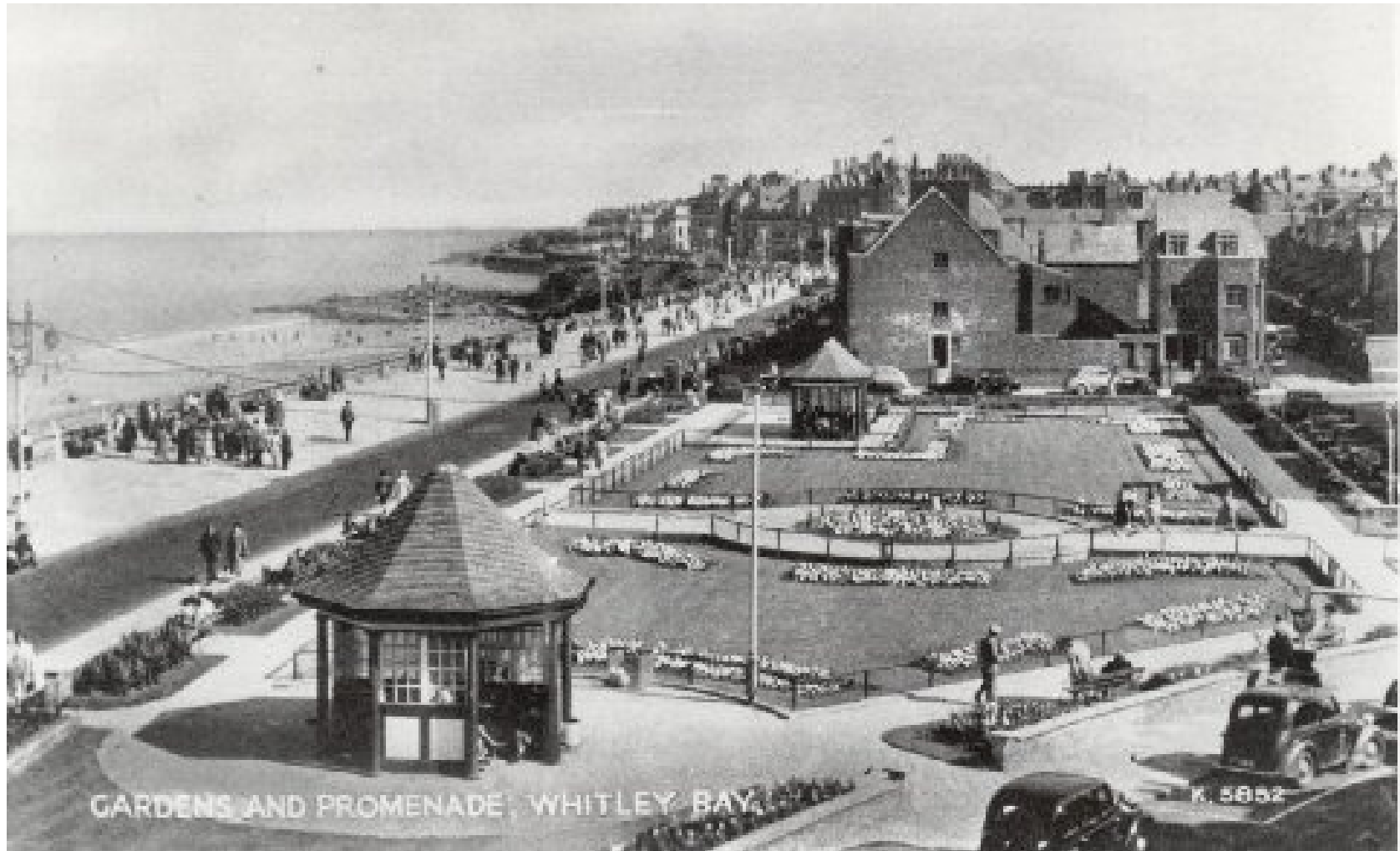




Copyright 1914

BAND-STAND, NORTHUMBERLAND PARK, NORTH SHIELDS.

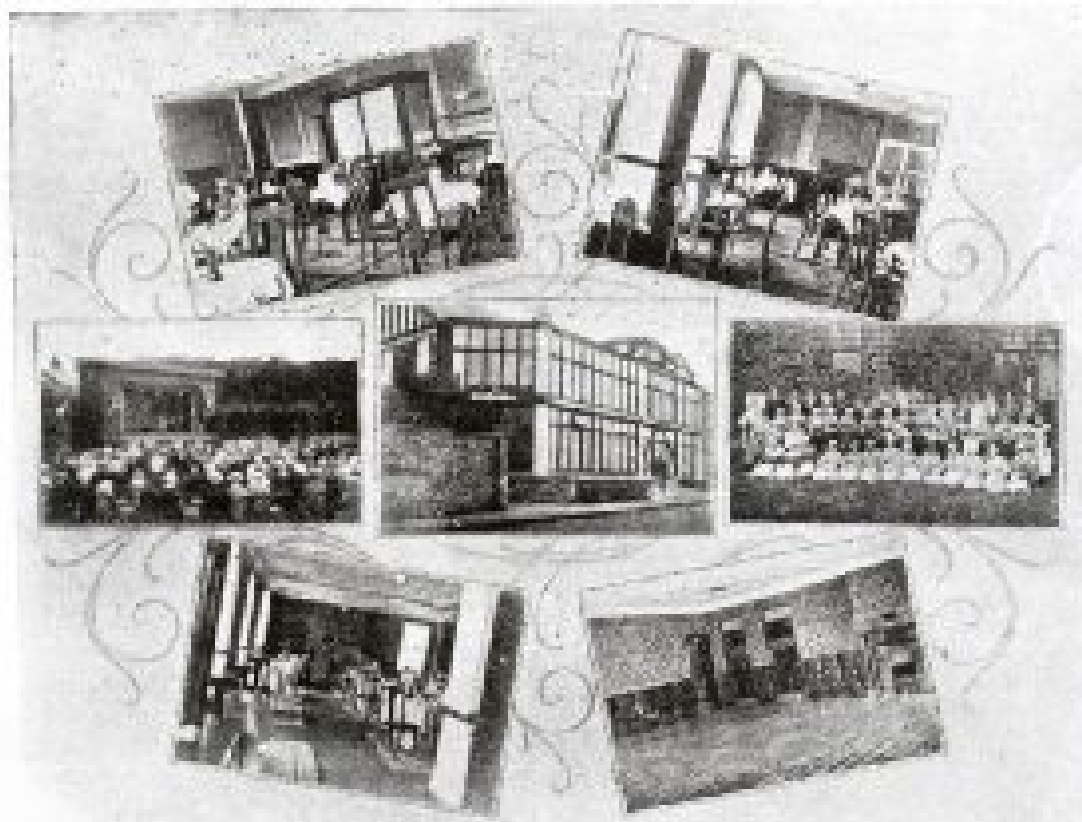
SAUNDERS & CO. LTD.
1142 NORTH BRIDGE



PRIORY HALL, WHITLEY BAY.

Telegrams: "PRIORY," Whitley Bay.

Telephone, 188.



DINNERS, 7 Courses, 7/6, 10/6, and 15/-.
Soda Fountain. Ices. Light Refreshments at Popular Prices.

DANCING

DAILY:

AFTERNOON 2 to 5 p.m.

LADIES, 1/6. GENTS, 2/-.

EVENING 7 to 10 p.m.

LADIES, 2/-, GENTS, 2/6.

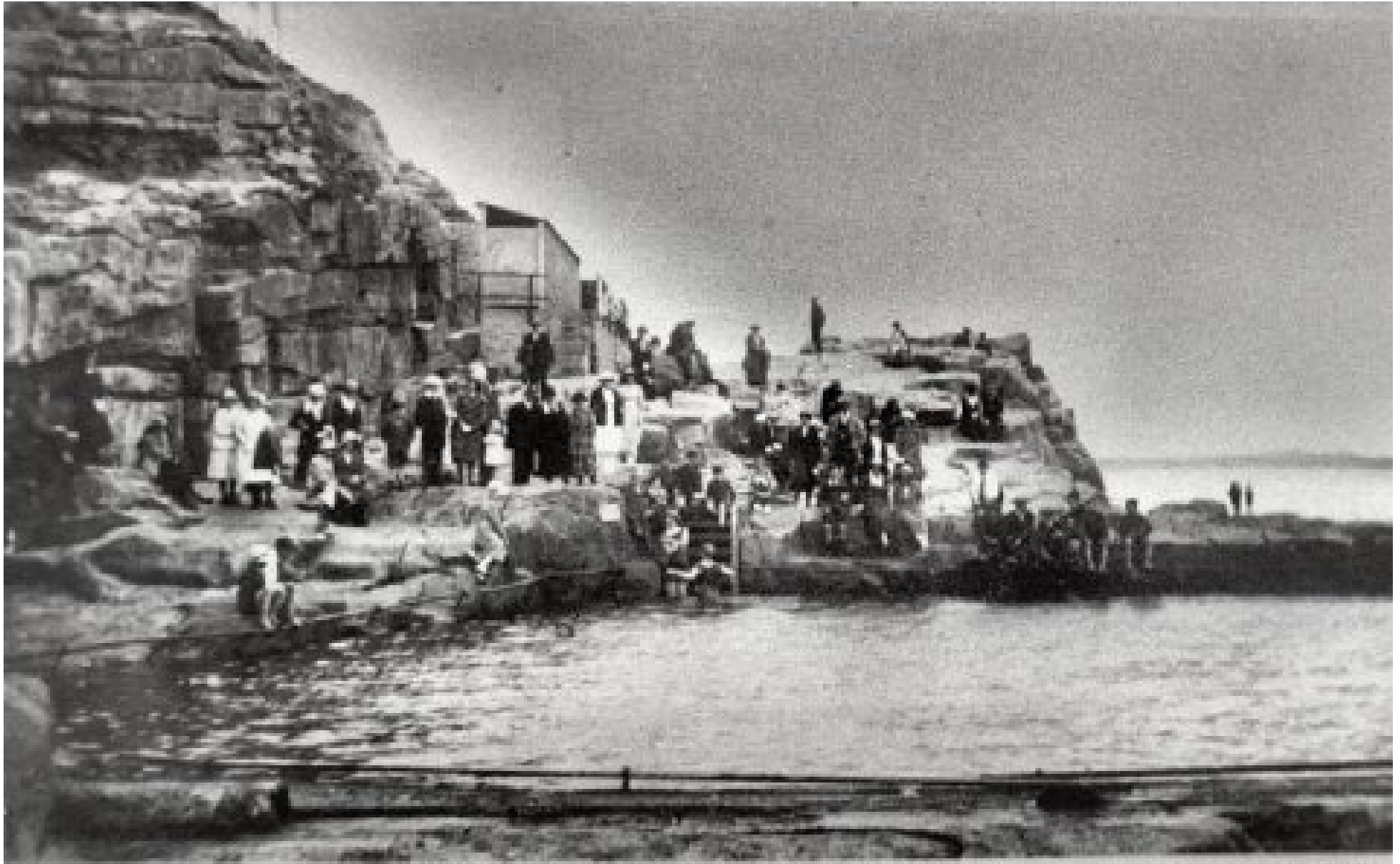
SKATING RINK

MORNING, AFTERNOON,
& EVENING SESSIONS.

SUNDAY

PROMENADE CONCERTS,

2 to 5 and 8 to 10 p.m.



Copyright 1917

BATHING POOL AND TABLE ROCK, CULLERCOATS.

UNIVERSITY OF
THE PACIFIC PRESS



